



Gwynedd-Mercy College

Are you wondering what items you will need to live on campus? The Office of Resident Life has compiled a list of items you may want to consider bringing with you. Along with these suggested items, we have also included a list of items that are not permitted in the residence halls. Please be sure to look over this list carefully prior to your arrival. Additionally, there are items you may want to coordinate with your roommate(s).

Suggested Items for Living on Campus

- toiletries/shower basket
- shower shoes/flip flops
- towels/washcloths
- bedding (twin extra long)
- laundry supplies
- hangers
- alarm clock
- extension cords that have **power surge protectors only (UL approved)**
- wastebasket
- flashlight
- umbrella
- fan
- desk lamp (non-halogen)
- bed risers
- decorative items
- computer and printer
- stationery/envelopes
- stamps
- stapler
- masking tape, blue painter's tape to hang items on the wall
- first aid supplies

Items to Coordinate with Roommate(s):

- television/coax TV cable cord
- carpet/rugs
- stick vacuum, sweeper or dust buster
- broom/dust pan
- individual room cleaning supplies
- ironing board/iron with auto shut-off
- small refrigerator : 2.0 to 4.0 only (limited rentals available move-in weekend)

Items to coordinate with Roommate(s) for Suite Style Rooms*:

- shower curtain
- toilet paper
- shower/bathroom cleaning supplies - Tilex, Comet, etc.

***Suite style rooms include St. Brigid, Siena, and Alexandria Halls**

The following items NOT permitted (subject to change as deemed necessary by the college)

- alcoholic beverages/ decorative alcohol containers
- illegal drugs/drug paraphernalia
- weapons of any kind
- firearms, including pellet guns/paintball guns
- ammunition
- fireworks or explosives
- dangerous materials
- individual room air conditioners
- darts and dart board (other than Velcro)
- candles (inc. decorative), incense, candle warmers
- halogen lamps of any kind (note: many desk lamps are halogen)
- animals of any kind (including but not limited to birds, fish, hamsters)
- portable heaters
- wall mounted shelves
- cinder blocks/bricks
- microwave ovens (available in kitchen lounges)
- Electric grills
- toaster ovens
- electrical cooking/heating devices of any kind

Items NOT permitted (cont.)

- any types of adhesives other than masking tape or blue painter's tape including, but not limited to mounting squares, hooks or nails, Scotch 3M products
- extension cords **without** power surge protectors (see below)

Important Safety Notice:

For safety purposes, extension cords without surge protectors (shown below) are not permitted in the Residence Halls.

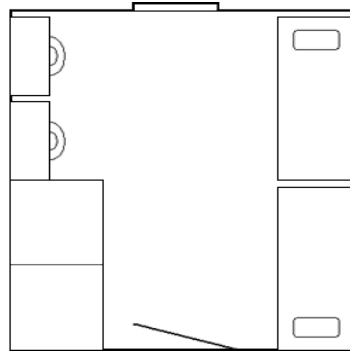


The Office of Resident Life strongly encourages students not to bring valuable jewelry or large amounts of cash to the college.

Residence Hall Floor Plans & Information

Loyola Hall

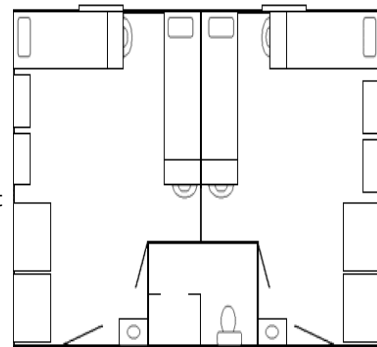
- Accommodations:** Double occupancy
- Air/Heat:** Heat only
- Cable Television:** In lounges; basic cable available in all rooms
- Designation:** Single-gender by floor
- Furniture:** 1 bed, 1 desk, 1 closet for each resident
- Internet:** wireless; and 1 Ethernet port per resident
- Kitchen:** Refrigerator, sink and microwave in lounges
- Laundry:** Free washers and dryers
- Lounges:** Available in various locations of the building
- Restrooms:** Community bathrooms on each floor
- Telephone:** 1 extension/voice mail box per



(Shown as a double)

St. Brigid & Siena Halls

- Accommodations:** Double or Triple occupancy
- Air/Heat:** Both. Controlled in the room
- Cable Television:** In lounges; basic cable available in all rooms
- Designation:** Coed by floor
- Furniture:** 1 bed, desk, wardrobe and 2 drawers per resident
- Internet:** wireless; and 1 Ethernet port per resident
- Kitchen:** One per floor (Siena only)
- Laundry:** Free washers and dryers
- Lounges:** One to two per floor
- Bathrooms:** In suites, two rooms connected by a semi-private bathroom
- Telephone:** 1 extension/voice mail box per resident
- Vending Machines:** first floor (St. Brigid and Siena); third floor (Siena only)



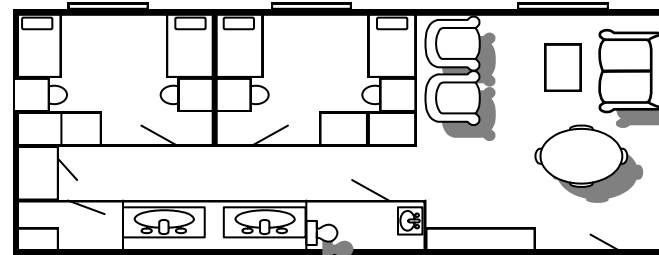
(Shown as a double)

Room Dimensions

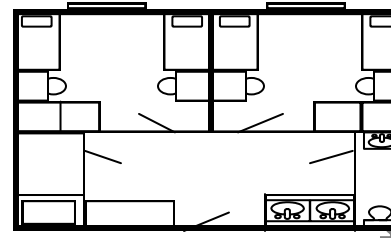
Loyola Hall	15'7" x 9'4"	(Traditional Standard)
St. Brigid & Siena Halls	14'6" x 13'4"	(Deluxe Double/Triple Suite)
Bed Dimensions	7' x 3'5"	(Extra-Long Twin sheets needed)

Alexandria Hall

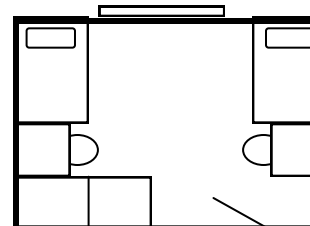
- Accommodations:** Double occupancy; suite and traditional double
- Air/Heat:** Both. Controlled in the room
- Cable Television:** In lounges, basic cable available in all rooms
- Designation:** Coed by suite
- Furniture:** 1 bed, 1 desk and chair, wardrobe with hanging rod and interior drawers and 3-drawer lockable chest per resident
- Internet:** wireless; and 1 Ethernet port per resident
- Kitchen:** Refrigerator, sink, and microwave on each floor
- Laundry:** free washers and dryers
- Lounges:** Multiple lounges throughout the building
- Restrooms:** In suites, two rooms sharing restroom facilities within the suite. In "C" wing, central restroom (1 each male and female) for 18 students
- Telephone:** 1 extension/voice mail box per resident
- Vending Machines:** On each floor
- Handicap Accessible:** On each floor



Deluxe Double Suite with Living Room



Standard Double Suite



Traditional Double

Room Dimensions

Bedrooms:	14'5" x 12'8"
Living Rooms: (where available)	18'10" x 12'8"
Beds:	7' x 3'5" (Extra-Long Twin sheets needed)

Suggested Items for Living on Campus

